

## Case Study



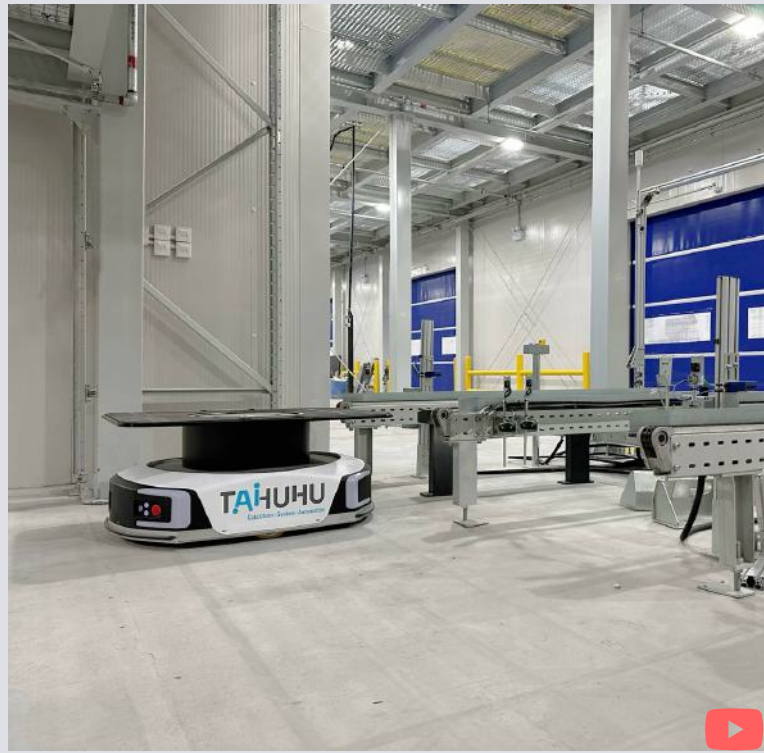
Cold-Chain

SkyCube

Pallet-to-Person

## The Challenge

- Labor Strain: Employees struggled to work efficiently in freezing conditions.
- Delivery Pressure: Rising demand required faster, streamlined operations.
- Precision: Errors in handling sensitive goods risked costly losses.



## Geek+ Solution

- Solution Deployed: Pallet-to-Person
- 4-Way Shuttle Trucks: Scalable vehicles optimized goods transport.
- Goods-to-Person Stations: Enabled accurate picking in controlled environments.
- Temperature-Controlled Docks: Maintained product integrity during loading.



Geek+ has revolutionized our operations. From warehousing to delivery, their seamless technology ensures low-temperature preservation across all processes. Managing three temperature zones is no longer a challenge.

## Geek+ Impact

- Efficiency: Reduced labor by 60% with automation.
- Accuracy: Achieved 99.99% order precision.
- Capacity: Increased storage by 30%.
- Continuity: Enabled 24/7 operations to meet demand.
- Satisfaction: Faster deliveries boosted customer trust.

## About Customer

- Industry Leader: TAHUHU supports frozen food, fresh produce, dairy, and retail.
- Commitment to Quality: Ensures safe, reliable delivery across temperature zones.
- Scale: Operates a vast network for sensitive product logistics.

Contact Us

View Case Online



## Case Study

Geek+ X

KERRY  
TJ LOGISTICS  
嘉里大榮物流

3PL

P800

Shelf-to-Person

### The Challenge

- Labor Strain: Employees struggled to work efficiently in freezing conditions.
- Delivery Pressure: Rising demand required faster, streamlined operations.
- Precision: Errors in handling sensitive goods risked costly losses.



### Geek+ Solution

- Fast Deployment: Full system live in six weeks, delivering quick impact.
- Flexible Fulfillment: Robots handled B2B and B2C orders with high accuracy.
- Smarter Storage: AI analyzed heat maps for optimal inventory placement.
- Energy Efficient: Robots operated in low-light environments to reduce power use.
- Easy Onboarding: Simple workflows minimized training time for staff.

“

Director of  
Business  
Planning,  
Kerry TJ Logistics

“Hardware implementation took only two weeks. The fast deployment of Geek+ robots allowed us to boost efficiency quickly while keeping accuracy high.”

### Geek+ Impact

- Higher Productivity: Faster, more accurate order fulfillment.
- Sustainability Gains: Lower energy usage supporting New Balance's green goals.
- Peak-Ready Operations: Scalable robotic workflows improved flexibility.
- Better Workplace Safety: Reduced physical strain for employees.
- Six-Week Transformation: Clear demonstration of rapid automation success.

### About Customer

- New Balance is a global sportswear leader known for high-quality footwear and apparel.
- Kerry TJ Logistics specializes in end-to-end supply chain and logistics services for top global brands.
- Together, they set out to elevate supply chain automation for the retail and sports industries.

Contact Us

View Case Online



## Case Study



3PL

P800

Shelf-to-Person



## The Challenge

- Labor Strain: Employees struggled to work efficiently in freezing conditions.
- Delivery Pressure: Rising demand required faster, streamlined operations.
- Precision: Errors in handling sensitive goods risked costly losses.

## Geek+ Solution

- Fast Deployment: Full system live in six weeks, delivering quick impact.
- Flexible Fulfillment: Robots handled B2B and B2C orders with high accuracy.
- Smarter Storage: AI analyzed heat maps for optimal inventory placement.
- Energy Efficient: Robots operated in low-light environments to reduce power use.
- Easy Onboarding: Simple workflows minimized training time for staff.



Director of  
Business  
Planning,  
Kerry TJ Logistics

“Hardware implementation took only two weeks. The fast deployment of Geek+ robots allowed us to boost efficiency quickly while keeping accuracy high.”

## Geek+ Impact

- Higher Productivity: Faster, more accurate order fulfillment.
- Sustainability Gains: Lower energy usage supporting New Balance's green goals.
- Peak-Ready Operations: Scalable robotic workflows improved flexibility.
- Better Workplace Safety: Reduced physical strain for employees.
- Six-Week Transformation: Clear demonstration of rapid automation success.

## About Customer

- Bolloré Logistics is a global leader in international transport and logistics, offering multimodal transport, customs compliance, supply chain management, and industrial project solutions.
- With 20,600 employees across 609 offices in 107 countries, it serves major global brands from its headquarters in Puteaux, France.
- As the first AMR-enabled 3PL operation in Australia, Geek+ helps Bolloré deliver state-of-the-art logistics services for luxury retail clients.

Contact Us

View Case Online

